



## **Abingdon Horticultural Society**

### **2024 Summer Newsletter**

#### **Number 124**

Welcome to the summer newsletter.

#### **Dates for the diary**

Tuesday	23 <sup>rd</sup> July	Summer show entries	Final day for submitting entry
Thursday	22 August	Trip	Kew Gardens See below for details
Saturday	7 <sup>th</sup> September	Autumn Show	2-4pm
Tuesday	15 <sup>th</sup> October	Talk	Bach Flower Remedies
Tuesday	19 <sup>th</sup> November	Talk	

#### **Chair Report - David Bingley & Summer Entries and Autumn Show - Barbara Bingley**

The Autumn Show is not far away so now is the time to start planning your entries. More information nearer the time but the schedule is available on the website.

Prior to the Autumn show there is the Summer Entry (see Autumn Show Schedule on the AHS website) There is just Class 83 to enter - Hanging baskets & containers. Entry (£1) by 9pm on Tuesday 23rd July for judging on Thursday 25th. Up to 4 baskets/containers will be judged as the one entry so select your best ones! The winner of this class receives the Summer Garden Cup. Prize money is £3, £2 & £1 for 1st, 2nd & 3rd prize winners respectively.

Janice Stretton-Smith has kindly and generously donated a new AHS trophy - the Celia Smith Challenge Cup. This will be awarded for the first time to the winner of the Junior, (under 16) classes in this year's Autumn Show. Please encourage children and grandchildren to enter.

The Northcourt Centre fund raising committee are holding a QUIZ NIGHT on Saturday 27th July. Tickets are £10 each with a maximum of 6 people per team. There will be a bar and a raffle. Doors open at 7 pm for a 7-30 start. All profits are used to support the maintenance and development of the centre that we use regularly. Further information is available on the Northcourt Centre website. Poster is included at the end of the newsletter.

#### **Holiday to Colchester- Suzanne Hamblin**

On Sunday 9th June at 10.25 am we began the pickups with our "driver" Alistair from Pulham Coaches, and with all 31 holidaymakers safely onboard we then headed off for Myddelton House Gardens, Enfield, the first visit of our holiday. The cafe at Myddelton House Gardens had our sandwiches all prepared and labelled which was a great help. It was a lovely couple of hours

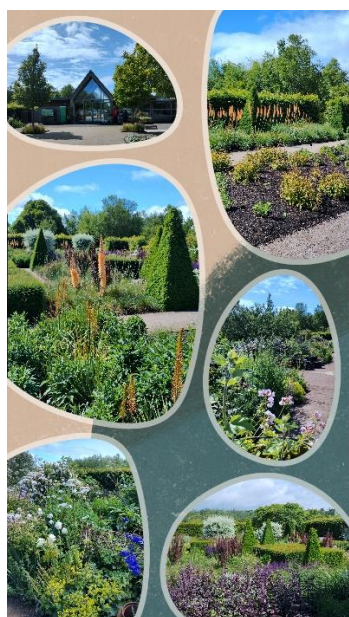
exploring the gardens, lake and glass houses with some beautiful exotic plants & a stunning pink cornice.



Myddleton House

On arrival at the Holiday Inn, Eight Ash Green, Colchester we collected our cases and made our way to reception who had all our room keys ready plus the menu choices for our first evening 3 course meal. With everyone freshened up we all met for dinner at 6 pm which was really lovely, and all left the tables feeling full. Some guests managed a swim before/after dinner or had an early night.

Monday 10th June 9 am departure for RHS Hyde Hall which was a cool but sunny day with the odd shower, we were met by an RHS staff member who briefed us as to what we could see at Hyde Hall and we were handed maps. We all enjoyed the beautiful gardens, lakes, restaurant and some of us appreciated the electric buggies at Hyde Hall. We departed at 3.30 pm to make our way back to the Hotel. It was one of our party's birthday, and the Hotel kindly gave a gift, card, glass of bubbly and produced a cake with candles which was a lovely surprise.

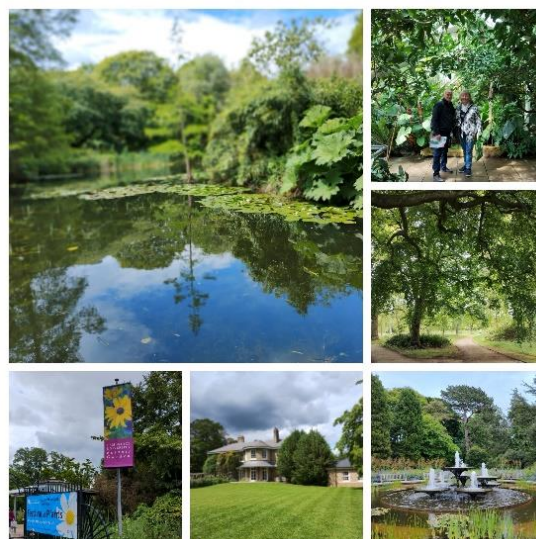


RHS Hyde Hall





Tuesday 11th June 9 am departure for Cambridge Botanic Gardens where we had a very enjoyable day taking in the different areas from Tropical to wildlife (30 different areas), although a few spots of rain around 12 noon, the glasshouses were extensive and contained some beautiful plants. We left at 2.30 pm to return to the Hotel.

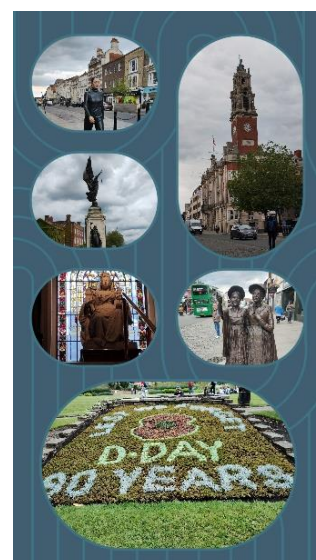


Cambridge Botanic Gardens

Wednesday 12th June 9 am departure for 10 am arrival at Sutton Hoo (National Trust) where we were able to walk round the Royal Burial Ground and enjoy vistas from the 17-metre viewing tower to discover the history of the ship burial of an Anglo-Saxon king and his treasured possessions. The Time Team were there carrying out archaeological work and a number of demonstrations of weaving, fabric dyeing and people dressed in Anglo-Saxon clothing. We were also able to visit Tranmer House, the former home of Edith Pretty, and visit the High Hall exhibition to see replica and original objects. We then departed at 12 noon to head into Colchester to explore, with some of our party deciding to return to the hotel for the afternoon and then Alistair came back and collected us at 4 pm in good time to freshen up before dinner.



Sutton Hoo



Colchester



Thursday 13th June 9 am departure for Anglesey Abbey Gardens & Lode Mill, where we arrived just after 10.30 am and greeted by National Trust staff with our maps. It was a lovely fine day and some of our party joined Philip at 11am for a Guided Tour of the Gardens, which was very interesting, all the gardens were beautiful. We left at 3 pm to return to the Hotel. Tips from our party were handed to Alistair, our coach driver, and Elaine for the Hotel staff and they were all very well received.

Friday 14th June 8.30 am suitcases all loaded onto the coach. 9.30 am departure from the Hotel to travel to Beth Chatto's Plants and Gardens, where we enjoyed all the beautiful plant collections, which were created using Beth Chatto's ecological gardening method and mantra of "the right plant for the right place", where plants grow best when placed in conditions closest to their own habitat. We also found time to visit the Nursery, Shop and Tearoom. At 1 pm we then boarded the coach for our return journey back to Abingdon, with Alistair keeping a careful eye on the traffic taking the best route to avoid the traffic on a busy Friday afternoon.



Overall, the holiday was a great success with everyone looking out for each other and circulating at dinner time to make new acquaintances, we were very fortunate with the hotel and staff, the choice and food at mealtimes and with Alistair our "driver" who was very calm, patient and a great driver which was a bonus. The holiday also gave some of our party the opportunity to meet up with friends and family, which worked well.

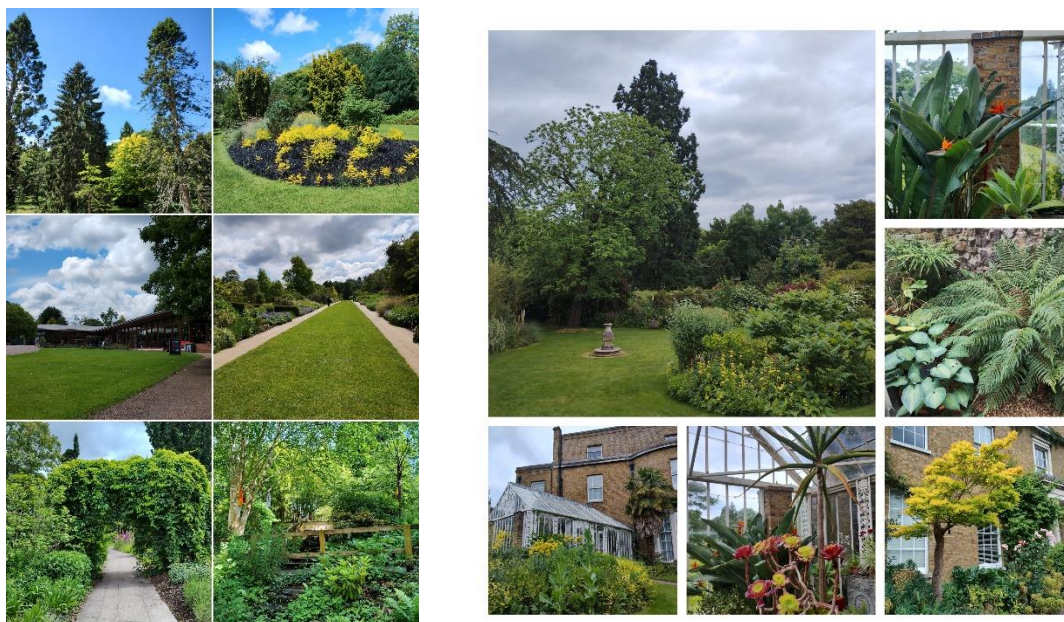
Thank you to everyone who came along and made it a lovely holiday and for the cards and messages received on my return, which are very much appreciated. Time to start planning the next holiday for 2025!



## Trips - Robin Carter

Our day out on 30th May to Sir Harold Hillier Gardens near Romsey.

34 members visited the gardens. Not having been before, I was a little concerned if they would be suitable for us. Several members had been before and said it was good. The weather was fair, dry and not too hot. The gardens were well spaced out with a mixture of borders and tree lined walks. The cafes were good and the staff very attentive. For those of us with time to spare there was a large garden centre to have a browse round. Another good A.H.S. day out!



Our next trip is to Kew Gardens on the 22nd August at the time of writing (22nd June) I have not got enough members for us to run this outing. If you are thinking of attending, please let me know before the end of July, as I will need to let the coach company and Kew Gardens know if we are going and numbers. Bills have to be paid then or we will have to pay cancellation fees.

### Outing to Kew Gardens on Thursday 22nd August 2024

The gardens have a 250 year history which began in 1759 with a 9 acre botanic garden within the pleasure grounds at Kew, it is now 326 acres. There are several large green houses including the Palm House, Temperate House and The Princess of Wales Conservatory. Other areas of interest are the Great Pagoda, Kew Palace and the Tree top Walkway. Of course the immaculate flower beds are all around to admire.

The cost of this outing is £46.00-per member aged over 65 and £48.00 if under 65. All members over 65 should have confirmation of their age in case asked for by the admission staff. If you do not have this, you may be asked to pay the extra £2. If you wish to join us, please forward your cheque made payable to AHS to me Robin Carter, 1 Langley Road, Abingdon, OX14 1YB as soon as possible but by 27th July at the latest together with a note of your name address and telephone number and the pickup point you would like to join the coach.

All members please let me have an E mail address, where possible, so I can contact you regarding the booking and any change of plans.

Places will be allocated as received and once all the places are filled your application will be returned along with your cheque. If by any chance we have any spare seats/places on the trip these can be filled by friends of our members at an extra £4 per person on the stated prices. Please contact me on or within a week of the closing date to check and confirm.

Coach Pick up points. Please note times may vary due to traffic, be at the point early!

- |   |       |  |
|---|-------|--|
| 1 | 09.00 | Radley Road/Cameron Avenue                                 |
| 2 | 09.05 | Radley Road/Norman Avenue                                  |
| 3 | 09.10 | Oxford Road/Opposite the shops                             |
| 4 | 09.15 | Oxford Road /Northcourt Road                               |
| 5 | 09.20 | Oxford Road /Last stop before the roundabout               |
| 6 | 09.25 | Dunmore Road/bus stop at the end of Farm Road              |
| 7 | 09.30 | Wootton Road opposite John Mason School                    |
| 9 | 09.40 | Drayton Road /Saxton Road bus stop (going out of Abingdon) |

Any queries please contact Robin –

Telephone 01235 202990; Mobile 07745333656; E Mail: [robin.carter78@yahoo.com](mailto:robin.carter78@yahoo.com)

## News from Members

### *Blue Sky Eco Café*

Susan Hammersley, an AHS committee member, is one of the volunteers who open the Blue Sky Eco Café on the first Tuesday of every month, except January and August, from 12 – 2pm at Long Furlong Community Centre, Abingdon, OX14 1XP. The next dates are July 6<sup>th</sup>, September 3<sup>rd</sup> and October 1<sup>st</sup>.

They serve organic, seasonal and locally sourced foods which include wholefoods, plant based, vegan and gluten free options. All food is freshly prepared. They are always delighted to receive any surplus garden vegetables to cook with. Contact [susanrmd@outlook.com](mailto:susanrmd@outlook.com) or 07732 561436.

Menus are available on the website: <https://blueskyecocafe.org.uk>.

### *ABA Association of Botanical Artists*

Lisa Coles and at least one other member of the club belong to ABA Association of Botanical Artists. Members contribute art to a themed online Gallery. The current theme is Drama  
<https://www.assocbotanicalartists.com/post/the-aba-gallery-4>

There are many lovely plants painted by 90 members from around the world. When you click on an image you will be able to magnify the artwork to see some of the finer detail and read about why the artist thought the plant dramatic.

## **Peelable plastic paint for glass to provide greenhouse summer shading - Provided by Peter Girling**

Members with glass greenhouses might like to consider using peelable plastic paint to reduce the intensity of the sun during the summer and reduce maximum temperatures. Previously I have tried fabric covers but these are tricky to instal, especially if you have self-opening roof windows.

This year I experimented with a new (to me) product from Thorndown, a company based in Glastonbury, Somerset. (The range of water-based paint products is displayed on their website, [www.thorndown.co.uk](http://www.thorndown.co.uk)).

Application of the paint is relatively easy using a mini roller and tray, plus a long handled mini roller for reaching the upper windows. Following my recent experience of removing the plastic paint, I advise applying a thick coat of the paint and only when dry conditions are expected to last for at least 48 hours. (I had the misfortune of rain arriving unexpectedly overnight which resulted in some slippage and wrinkling of the semi-dried paint layer!) To enable easier removal later, I also advise leaving about one inch unpainted around the edges of the glass so that the paint does not touch and adhere to the metal frames.

Remove the plastic paint when the weather starts to cool. It can be peeled off, starting by prizing up one corner, then peeling off the whole sheet at one go. This was more easily achieved on the vertical glass panes than on the angled roof glazing. It also requires the paint to be damp and cool, a task for early morning after rain. If the sun comes up it inevitably heats the air in the greenhouse and keeps the paint layer dry and brittle, so that the paint does not readily peel off! It may also be helpful to keep the paint damp by using a fine spray of water during removal.

How effective was the paint in reducing temperatures in the greenhouse? I cannot provide definitive evidence, although my greenhouse rarely exceeded 40 degrees centigrade compared to 50C previously, which is still well above the optimum temperature for plant growth. However, I think that a thicker layer of paint should improve the paint's protective property, as well as making its removal easier in the autumn. I did not use the paint on all glass panes which received direct sunlight, so next summer I will buy a bigger tin and apply the paint more thickly on more panels.

### **Obituaries**

We have received the sad news that Dave Higgs, one of our long-standing members, passed away on the 13th of June. Dave regularly attended society talks and entered produce from his garden in the shows. Our condolences go to his wife and sons at this time.

### **Requests**

If any members have any useful garden tips, tasty menus they wish to share or any other items of interest they would like to have considered for the next newsletter then please forward these to the secretary, Linda Berry.

Donations for the raffle would be greatly appreciated. Barry and Diana Wiggins, who organise the raffles, would like to thank all those who have already donated this year.

Anyone who has unwanted packets of seeds please bring them along to a talk for us to pass on to members who would like them.

### **Sponsor**

Charlton Park Garden Centre - Wantage, sponsors our Society by supplying us with plants for raffles. Their garden centre has an extensive range of quality plants and garden requisites. They also bring a wide range of seasonal plants and bulbs to the Abingdon Market on a Monday. We hope you will continue to support them.

### **Contacts**

[secretary@abingdon-hort-soc.org.uk](mailto:secretary@abingdon-hort-soc.org.uk)  
[membership@abingdon-hort-soc.org.uk](mailto:membership@abingdon-hort-soc.org.uk)

Website: [www.abingdon-hort-soc.org.uk](http://www.abingdon-hort-soc.org.uk)



# QUIZ NIGHT

At NORTHCOURT CENTRE on  
Saturday 27<sup>TH</sup> JULY 2024

Tickets £10 each

6 people maximum per table

Start time 7.30pm

Doors open 7.00pm

BAR (Snacks available) Raffle

Tickets available from Groups or on-line. At door if numbers allow.  
Card payments accepted.



<https://buytickets.at/northcourtcentre/1276501>

Any queries contact Jenny Ward: - [jenny.ward@draweven.co.uk](mailto:jenny.ward@draweven.co.uk)